

Een wandeling met Jezus

Nydia van der Zwaal

Moderately fast with lighthearted feeling

Measures 1-9 of the piece. The music is in 3/4 time with a key signature of three flats (B-flat, E-flat, A-flat). The melody is in the treble clef, and the accompaniment is in the bass clef. The tempo/mood is 'Moderately fast with lighthearted feeling'. The dynamic marking *mp* (mezzo-piano) is present in both staves.

10

Measures 10-17. The melody continues with eighth and sixteenth notes. The accompaniment features a steady eighth-note pattern in the bass.

18

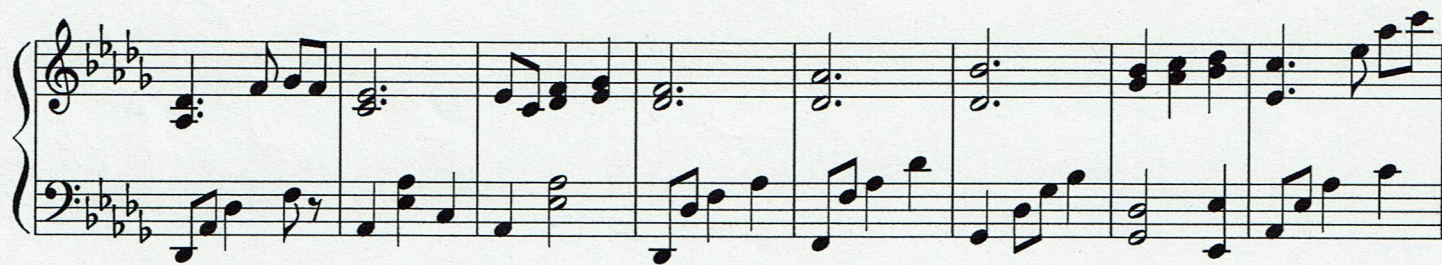
Measures 18-24. The melody has some rests and eighth-note patterns. The accompaniment continues with eighth-note figures.

25

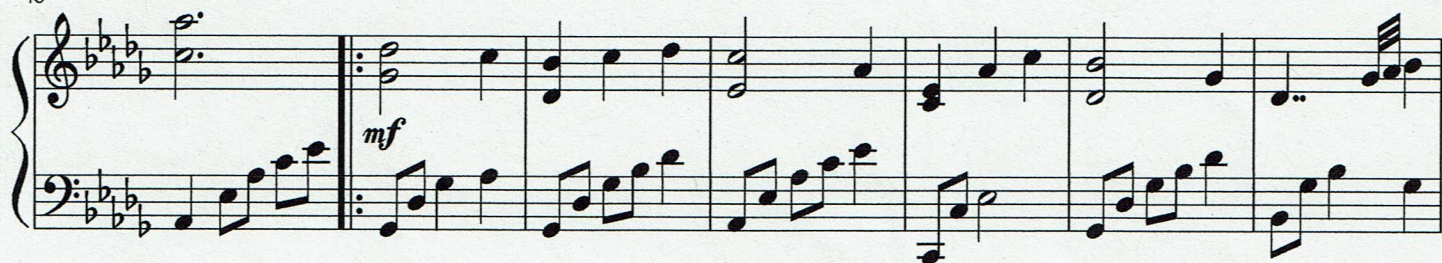
Measures 25-31. The melody includes a half-note rest in measure 26. The accompaniment has a more varied rhythmic pattern, including some rests.

32

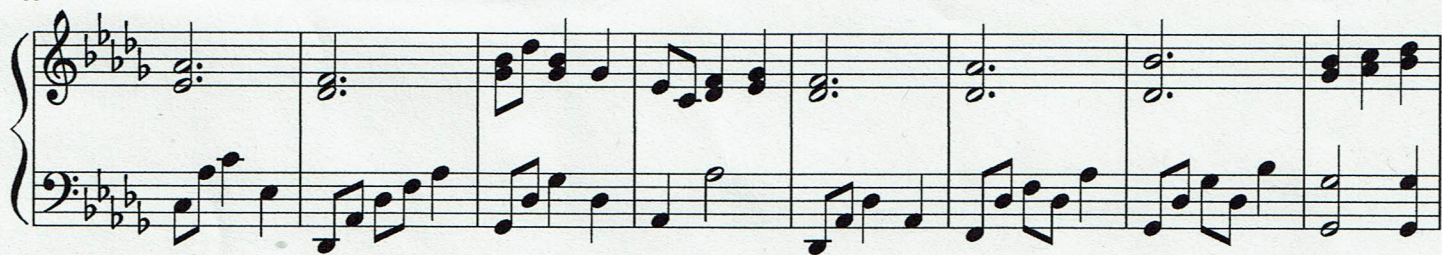
Measures 32-38. The piece concludes with a final cadence. The melody ends with a quarter note, and the accompaniment ends with a half note. There is a double bar line at the beginning of measure 32.



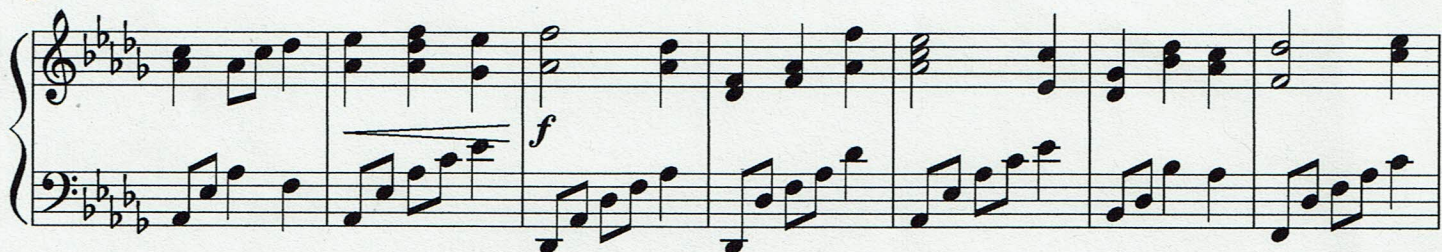
48



55



63



70



77



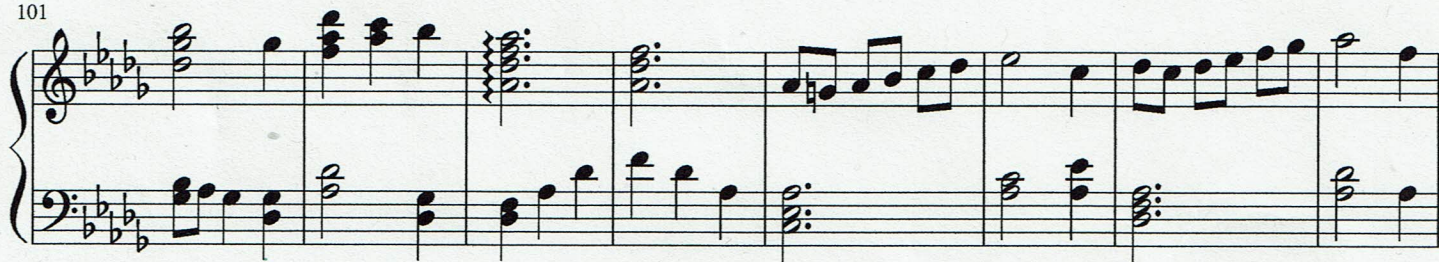
84



92



101



109

